



The Suit & Tuxedo

**RENTAL COLLECTION**

JFW

JIM'S FORMAL WEAR

STORE COPY  
2024

# Ultra Slim & Slim Fit Styles for **EVERY BODY**



Cover Photo Courtesy of:  
Joleen Willis Photography  
joleenwillis.com



**Fashion-Forward & Comfortable  
for any shape or size**

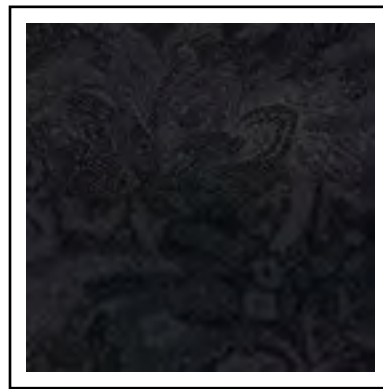
(up to size 66)

# COAT FABRIC SWATCHES

## FOR RENTAL

Choose your look from our collection of colored tuxedos & suits

Reference page number for tuxedo & suit details



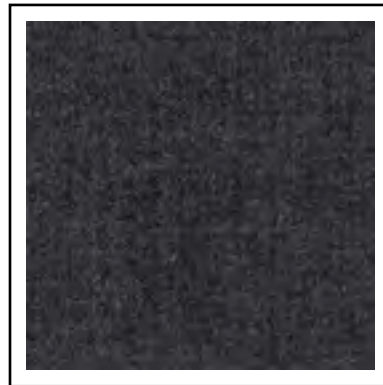
**Color:** Black Paisley  
**Style:** 182  
**Page:** 38



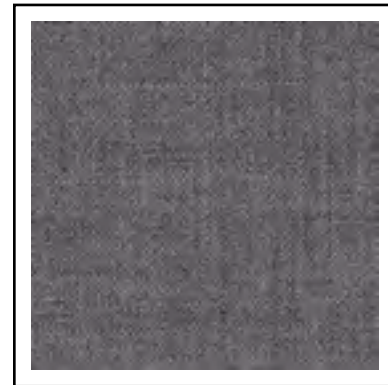
**Color:** Granite Paisley  
**Style:** 192  
**Page:** 37



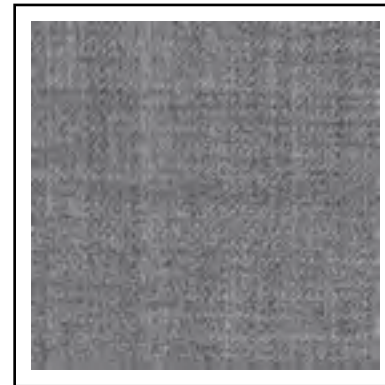
**Color:** Grey Portofino  
**Style:** 301  
**Page:** 41



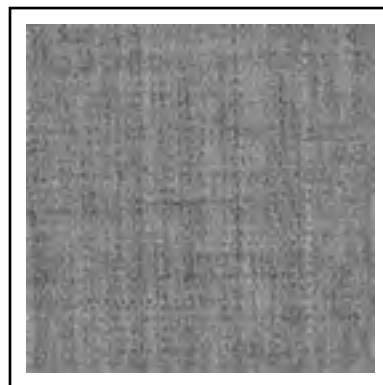
**Color:** Steel Grey  
**Styles:** 391, 392  
**Page:** 24, 25



**Color:** Medium Grey  
**Style:** 350  
**Page:** 19



**Color:** Heather Grey  
**Style:** 262  
**Page:** 31



**Color:** Heather Grey  
**Style:** 362  
**Page:** 42



**Color:** Burgundy  
**Style:** 201  
**Page:** 34



**Color:** Apple Red Paisley  
**Style:** 122  
**Page:** 39

# COAT FABRIC SWATCHES

## FOR RENTAL

Choose your look from our collection of colored tuxedos & suits

Reference page number for tuxedo & suit details



**Color:** Navy  
**Styles:** 371, 372  
**Page:** 22, 23



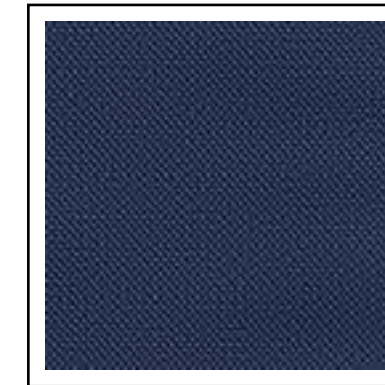
**Color:** Blue  
**Style:** 302  
**Page:** 20



**Color:** Cobalt Blue  
**Style:** 211  
**Page:** 32



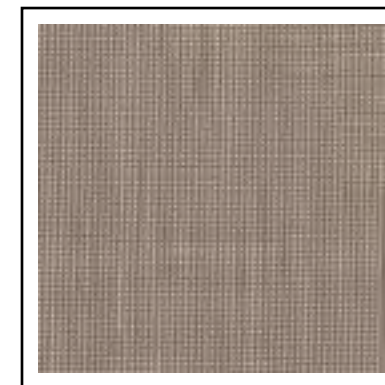
**Color:** Cobalt Paisley  
**Style:** 132  
**Page:** 40



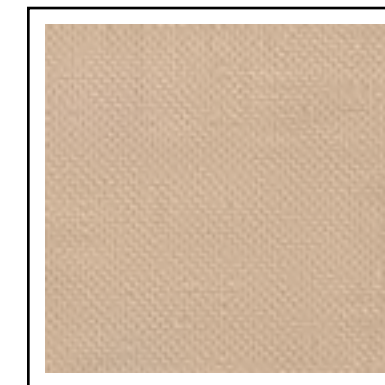
**Color:** Indigo Blue  
**Style:** 221  
**Page:** 33



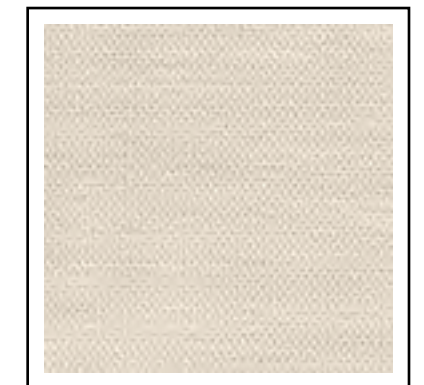
**Color:** White/Silver Paisley  
**Style:** 172  
**Page:** 36



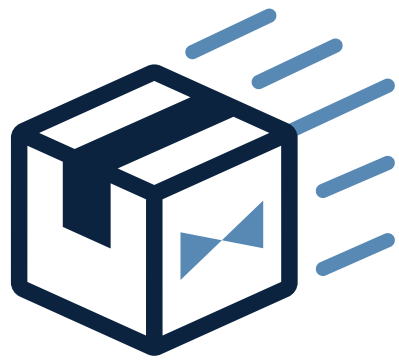
**Color:** Sand  
**Style:** 202  
**Page:** 30



**Color:** Tan  
**Style:** 252  
**Page:** 35



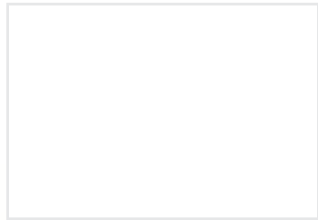
**Color:** Tan  
**Style:** 272  
**Page:** 18



## DIRECT DELIVERY

HOME • OFFICE • DESTINATION

Convenient delivery options for your wedding party!  
Great for out-of-town groomsmen.



Direct Shipping Cost



## PRICING INFORMATION

Find Tuxedos, Suits and Formal Accessories to match any budget



### DIAMOND COLLECTION | Pages 16-39

Diamond Collection ensembles include:  
Any pant, any basic shirt with nickel-plated jewelry, any tie and any vest or cummerbund.



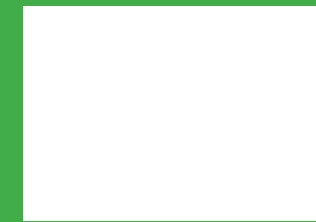
### PLATINUM COLLECTION | Pages 40-49

Platinum Collection ensembles include:  
Any pant, any basic shirt with nickel-plated jewelry, any tie and any vest or cummerbund.



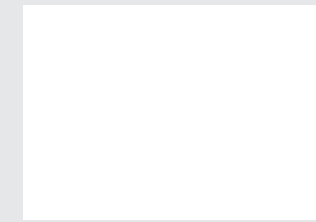
### GOLD COLLECTION | Pages 50-51

Gold Collection ensembles include:  
Any pant, any basic shirt with nickel-plated jewelry, any tie and any vest or cummerbund.



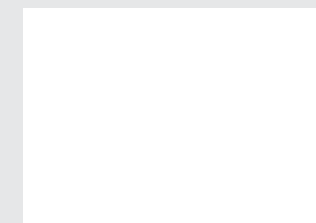
### BUDGET COLLECTION | Pages 52-53

Budget Collection ensembles include:  
Any pant, any basic shirt with nickel-plated jewelry, any tie and any vest or cummerbund.



### POCKET SQUARES

An essential component of every ensemble, a colorful pocket square is available to match nearly every fullback vest or tie offered. Don't forget to add one to your look!



### ACCIDENTAL DAMAGE WAIVER (ADW) - added to each rental

The ADW relieves you from additional charges resulting from accidental damages when they can't be repaired through normal dry cleaning or minor tailoring. The ADW does not cover malicious damages, lost or stolen items, or any late return charges.

All Tuxedo and Suit Rentals MUST be returned the next business day to avoid additional rental charges!



## Ring Bearer SAVINGS

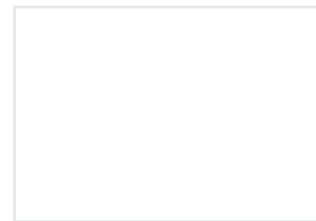
ALL STYLES are specially priced for your little guy.

### To qualify for the Ring Bearer Special Price:

- ▶ The Ring Bearer must be accompanied by the groom's tuxedo or suit rental and five fully paid rentals in the wedding party.
- ▶ Ring Bearer's tuxedo or suit may not exceed size 16.

All Tuxedos and Suits are specially priced for the Ring Bearer at:

Any pant, basic shirt, tie and premium vest included; shoes and pocket squares are additional.





shown:

ALLURE MEN®

Allure Men Heather Grey Clayton Suit - Style 262/N262



# RENT OR BUY

THE SAME DESIGNER STYLES SO THE WHOLE PARTY MATCHES



## RENT OR BUY STYLES



**MICHAEL KORS**  
Legacy Performance Stretch  
Ultra Slim Fit Tuxedo

To Rent Style 921 see page 16  
To Buy Style N921 see page 4 in  
the JFW For Purchase Catalog



**MICHAEL KORS**  
Black Performance Stretch  
Ultra Slim Fit Wedding Suit

To Rent Style 421 see page 17  
To Buy Style N421 see page 8 in  
the JFW For Purchase Catalog



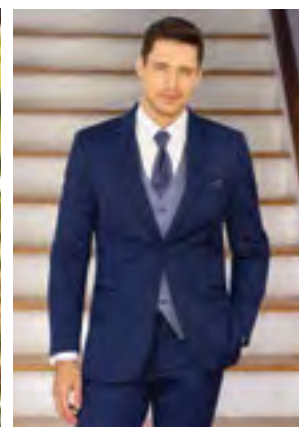
**MICHAEL KORS**  
Tan Performance Stretch  
Ultra Slim Fit Wedding Suit

To Rent Style 272 see page 18  
To Buy Style N272 see page 5 in  
the JFW For Purchase Catalog



**MICHAEL KORS**  
Medium Grey Performance Stretch  
Ultra Slim Fit Wedding Suit

To Rent Style 350 see page 19  
To Buy Style N350 see page 9  
in the JFW For Purchase Catalog



**MICHAEL KORS**  
Blue Performance Stretch  
Ultra Slim Fit Wedding Suit

To Rent Style 302 see page 20  
To Buy Style N302 see page 7 in  
the JFW For Purchase Catalog



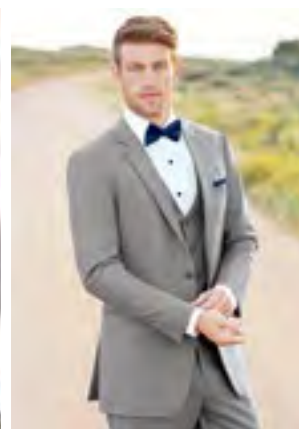
**MICHAEL KORS**  
Navy Sterling  
Slim Fit Wedding Suit

To Rent Style 372 see page 23  
To Buy Style N372 see page 6 in  
the JFW For Purchase Catalog



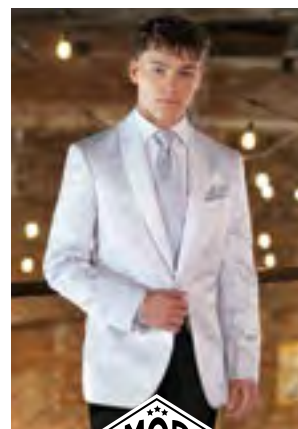
**MICHAEL KORS**  
Steel Grey Sterling  
Slim Fit Wedding Suit

To Rent Style 392 see page 25  
To Buy Style N392 see page 10  
in the JFW For Purchase Catalog



**ALLURE MEN**  
Heather Grey Clayton  
Ultra Slim Fit Suit

To Rent Style 262 see page 31  
To Buy Style N262 see page 11  
in the JFW For Purchase Catalog



**MÖD**  
White/Silver Aries Paisley  
Slim Fit Tuxedo

To Rent Style 172 see page 35  
To Buy Style N172 see page 28  
in the JFW For Purchase Catalog



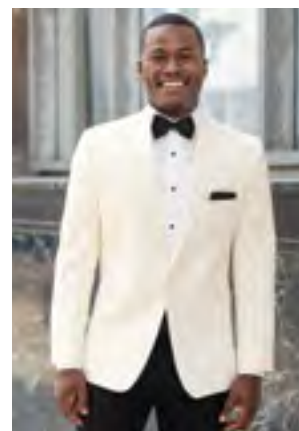
**MÖD**  
Granite Aries Paisley  
Slim Fit Tuxedo

To Rent Style 192 see page 36  
To Buy Style N192 see page 30  
in the JFW For Purchase Catalog



**MÖD**  
Black Aries Paisley  
Slim Fit Tuxedo

To Rent Style 182 see page 37  
To Buy Style N182 see page 29  
in the JFW For Purchase Catalog



**stephengeoffrey**  
Ivory Classic Shawl  
Slim Fit Wedding Tuxedo

To Rent Style 601 see page 48  
To Buy Style N601C see page 27  
in the JFW For Purchase Catalog



**stephengeoffrey**  
White Classic Shawl  
Slim Fit Wedding Tuxedo

To Rent Style 701 see page 51  
To Buy Style N70 see page 27 in  
the JFW For Purchase Catalog

# MIX&MATCH FOR THE PERFECT LOOK!



## Groom Look

To Buy Style N192:  
see page 30 in the  
JFW For Purchase Catalog

## Groomsmen Look

To Rent Style 421:  
see page 17



# RENT OR BUY TO SUIT YOUR BUDGET!



## Groom Look

To Buy Style N272C:  
see page 5 in the  
JFW For Purchase Catalog

## Groomsmen Look

To Rent Style 421:  
see page 17



## Groom Look

To Buy Style N91C:  
see page 19 in the  
JFW For Purchase Catalog

## Groomsmen Look

To Rent Style 350:  
see page 19



## Groom Look

To Buy Style NHTC:  
see page 13 in the  
JFW For Purchase Catalog

## Groomsmen Look

To Rent Style 302:  
see page 20



## Groom Look

To Buy Style N292C:  
see page 12 in the  
JFW For Purchase Catalog

## Groomsmen Look

To Rent Style 202:  
see page 30



## Groom Look

To Buy Style NHGC:  
see page 15 in the  
JFW For Purchase Catalog

## Groomsmen Look

To Rent Style 421:  
see page 17





**921-Legacy Performance Stretch**  
Ultra Slim Fit Tuxedo  
by Michael Kors  
page 16



**421-Black Performance Stretch**  
Ultra Slim Fit Wedding Suit  
by Michael Kors  
page 17



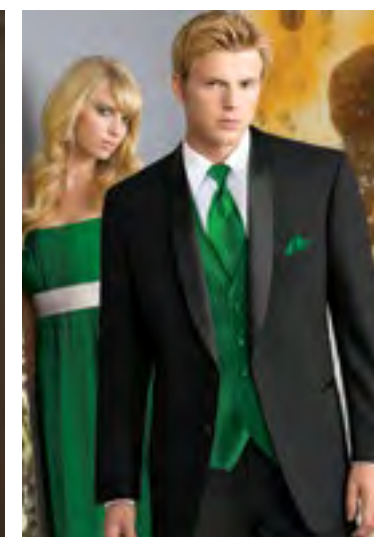
**981-Force Performance Stretch**  
Ultra Slim Fit Tuxedo  
by Michael Kors  
page 21



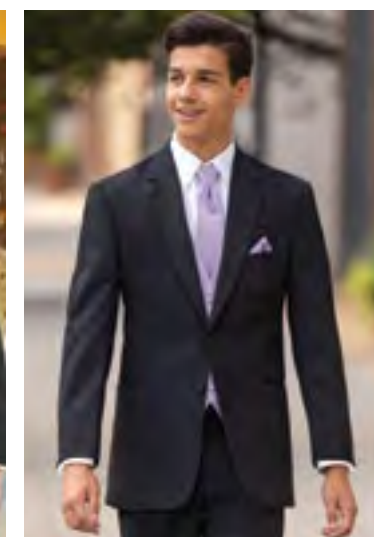
**471-Black Sterling**  
Ultra Slim Fit Wedding Suit  
by Michael Kors  
page 26



**182-Black Aries Paisley**  
Slim Fit Tuxedo  
by Mark of Distinction  
page 37



**822-Cyprus**  
Modern Fit Tuxedo  
by Stephen Geoffrey  
page 43



**852-Emerson**  
Modern Fit Tuxedo  
by Stephen Geoffrey  
page 44



**802-Black Troy**  
Modern Fit Tuxedo  
by Stephen Geoffrey  
page 45



**472-Black Sterling**  
Slim Fit Wedding Suit  
by Michael Kors  
page 27



**991-Berkeley**  
Ultra Slim Fit Tuxedo  
by Michael Kors  
page 28



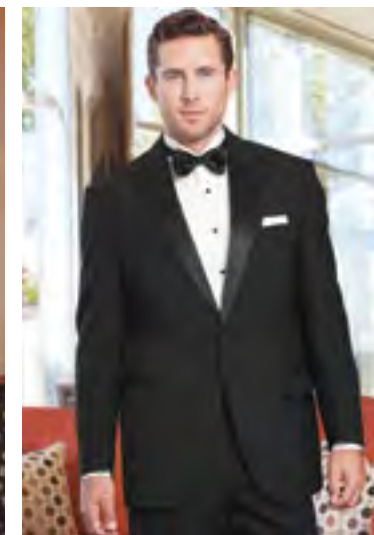
**990-Berkeley**  
Slim Fit Tuxedo  
by Michael Kors  
page 29



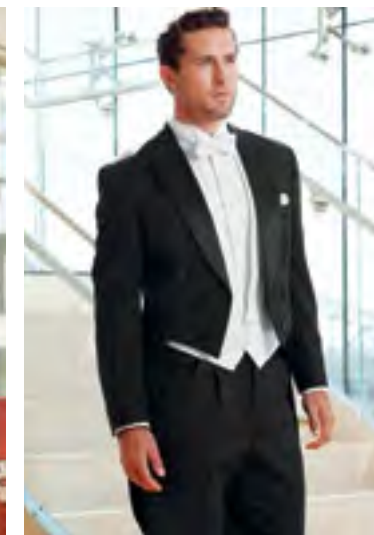
**192-Granite Aries Paisley**  
Slim Fit Tuxedo  
by Mark of Distinction  
page 36



**820-Classic Notch**  
Traditional Fit Tuxedo  
-  
page 50



**880-Classic Peak**  
Traditional Fit Tuxedo  
-  
page 52

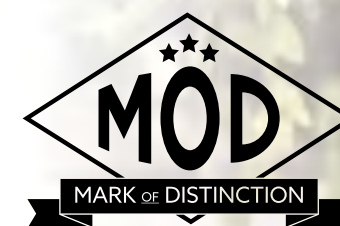


**588-Classic Peak Fulldress**  
Traditional Fit Tuxedo  
-  
page 53

## MICHAEL MICHAEL KORS

**Legacy Ultra Slim Fit  
Performance Stretch Tuxedo**  
Style 921

Photo Courtesy of:  
Joleen Willis Photography  
joleenwillis.com



**Black Aries Paisley**  
Slim Fit Tuxedo  
Style 182



# GREY STYLES

# BLUE/RED STYLES



**350-Medium Grey Performance Stretch**  
Ultra Slim Fit Wedding Suit  
by Michael Kors  
page 19



**391-Steel Grey Sterling**  
Ultra Slim Fit Wedding Suit  
by Michael Kors  
page 24



**392-Steel Grey Sterling**  
Slim Fit Wedding Suit  
by Michael Kors  
page 25



**262-Heather Grey Clayton**  
Ultra Slim Fit Suit  
by Allure Men  
page 31



**302-Blue Performance Stretch**  
Ultra Slim Fit Wedding Suit  
by Michael Kors  
page 20



**371-Navy Sterling**  
Ultra Slim Fit Wedding Suit  
by Michael Kors  
page 22



**372-Navy Sterling**  
Slim Fit Wedding Suit  
by Michael Kors  
page 23



**211-Cobalt Blue Tribeca**  
Ultra Slim Fit Tuxedo  
by Ike Behar  
page 32



**362-Heather Grey Aspen**  
Slim Fit Tuxedo  
by Stephen Geoffrey  
page 41



**301-Grey Portofino**  
Slim Fit Tuxedo  
by Tony Bowls  
page 42



**221-Indigo Blue Lane**  
Ultra Slim Fit Tuxedo  
by Ike Behar  
page 33



**132-Cobalt Aries Paisley**  
Slim Fit Tuxedo  
by Mark of Distinction  
page 33



**201-Burgundy Empire**  
Ultra Slim Fit Tuxedo  
Kenneth Cole  
page 34



**122-Apple Red Aries Paisley**  
Slim Fit Tuxedo  
by Mark of Distinction  
page 38



## ALLURE MEN

**Heather Grey Clayton**  
Ultra Slim Fit Suit  
Style 262



## MICHAEL MICHAEL KORS

**Blue Performance Stretch**  
Ultra Slim Fit Wedding Suit  
Style 302



# TAN, WHITE & IVORY STYLES

# FASHION STYLES



**272-Tan Performance Stretch**  
Ultra Slim Fit Wedding Suit  
by Michael Kors  
page 18



**202-Sand Brunswick**  
Ultra Slim Fit Suit  
by Allure Men  
page 30



**252-Tan Havana**  
Slim Fit Suit  
by Lord West  
page 40



**172-White/Silver Aries Paisley**  
Slim Fit Tuxedo  
by Mark of Distinction  
page 35



**751-Waverly**  
Ultra Slim Fit Tuxedo  
by Ike Behar  
page 46



**712-White Troy**  
Modern Fit Tuxedo  
by Stephen Geoffrey  
page 47



**701-White Classic Shawl**  
Slim Fit Tuxedo  
by Stephen Geoffrey  
page 51



**601-Ivory Classic Shawl**  
Slim Fit Tuxedo  
by Stephen Geoffrey  
page 48



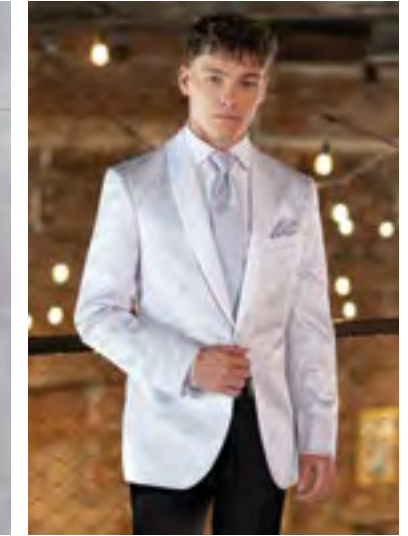
**602-Ivory Troy**  
Modern Fit Tuxedo  
by Stephen Geoffrey  
page 49



**211-Cobalt Blue Tribeca**  
Ultra Slim Fit Tuxedo  
by Ike Behar  
page 32



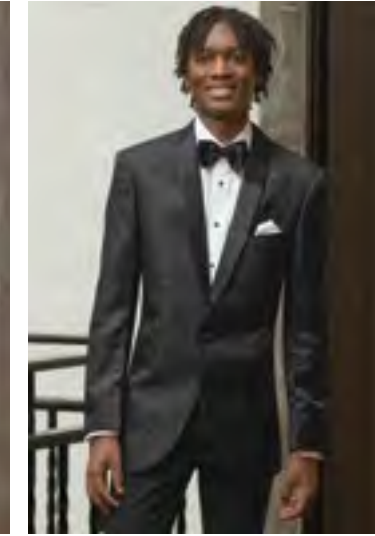
**201-Burgundy Empire**  
Ultra Slim Fit Tuxedo  
Kenneth Cole  
page 34



**172-White/Silver Aries Paisley**  
Slim Fit Tuxedo  
by Mark of Distinction  
page 35



**192-Granite Aries Paisley**  
Slim Fit Tuxedo  
by Mark of Distinction  
page 36



**182-Black Aries Paisley**  
Slim Fit Tuxedo  
by Mark of Distinction  
page 37



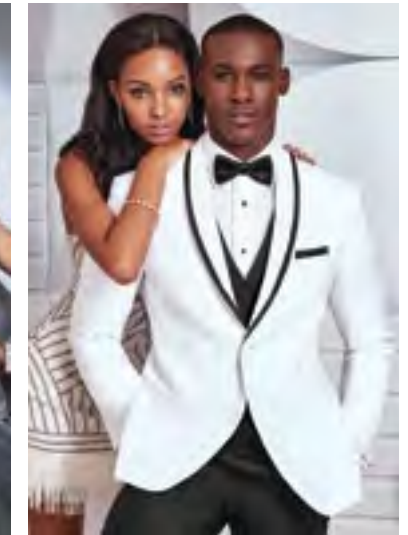
**122-Apple Red Aries Paisley**  
Slim Fit Tuxedo  
by Mark of Distinction  
page 38



**132-Cobalt Aries Paisley**  
Slim Fit Tuxedo  
by Mark of Distinction  
page 39



**301-Grey Portofino**  
Slim Fit Tuxedo  
by Tony Bowls  
page 42



**751-Waverly**  
Ultra Slim Fit Tuxedo  
by Ike Behar  
page 46

# MICHAEL KORS

## Legacy Performance Stretch Tuxedo

Style 921

**U** **ULTRA SLIM FIT**  
Trim and tapered styling, fits close to the body.

**Size Scale A2** - see page 54

**Men's coat sizes: 34-74**

**Boys' coat sizes: 3-18**

**921 pant sizes: 18-71**

### Features:

- ▶ Tailored to fit all body types
- ▶ CoolMax® performance stretch fabric
- ▶ Satin notch lapel, side-vented, 30<sup>1/2</sup>" length
- ▶ Shown with ultra slim fit pants with buttons to accommodate suspenders

### Fabric Content:

CoolMax® / Sorona® / Wool

### To order ensemble as shown:

Coat	<b>921</b>
Ultra Slim Fit Pants	<b>921</b>
Shirt (upcharge)	<b>96W</b>
Tie	<b>BSAT</b>
Fullback Vest	<b>F921</b>
Jewelry	<b>BLACK</b>
Formal Shoes (upcharge)	<b>BXS</b>
Pocket Square (purchase only)	<b>PWWH</b>

### Black Pant Option:

Ultra Slim Fit Pants **921**



**SCAN ME**  
for additional images



To BUY see page 4 in the JFW For Purchase Catalog



To BUY see page 8 in the JFW For Purchase Catalog



# MICHAEL KORS

## Black Performance Stretch Wedding Suit

Style 421

**U** **ULTRA SLIM FIT**  
Trim and tapered styling, fits close to the body.

**Size Scale A2** - see page 54

**Men's coat sizes: 34-74**

**Boys' coat sizes: 3-18**

**921 pant sizes: 18-71**

### Features:

- ▶ Tailored to fit all body types
- ▶ CoolMax® performance stretch fabric
- ▶ Self-framed notch lapel, side-vented, 29<sup>1/2</sup>" length
- ▶ Shown with ultra slim fit pants with belt loops and buttons to accommodate suspenders

### Fabric Content:

CoolMax® / Sorona® / Wool

### To order ensemble as shown:

Coat	<b>421</b>
Ultra Slim Fit Pants	<b>921</b>
Shirt (upcharge)	<b>96W</b>
Tie	<b>WXRW</b>
Fullback Vest	<b>F921</b>
Jewelry	<b>BLACK</b>
Formal Shoes (upcharge)	<b>BXS</b>
Pocket Square (purchase only)	<b>PWRW</b>
Belt (purchase only)	<b>NBLT</b>

### Black Pant Option:

Ultra Slim Fit Pants **921**



**SCAN ME**  
for additional images

DIAMOND COLLECTION

DIAMOND COLLECTION

# MICHAEL KORS

## Tan Performance Stretch Wedding Suit

Style 272

**U** **ULTRA SLIM FIT**  
Trim and tapered styling, fits close to the body.

**Size Scale:** A2 - see page 54

**Men's coat sizes:** 34-74

**Boys' coat sizes:** 3-18

**272 pant sizes:** 18-71

### Features:

- ▶ Tailored to fit all body types
- ▶ CoolMax® performance stretch fabric
- ▶ Self-framed notch lapel, side-vented, 29½" length
- ▶ Shown with ultra slim fit pants with belt loops and buttons to accommodate suspenders

### Fabric Content:

CoolMax® / Sorona® / Wool

### To order ensemble as shown:

Coat	<b>272</b>
Ultra Slim Fit Pants	<b>272</b>
Shirt (upcharge)	<b>96W</b>
Tie	<b>WLTE</b>
Fullback Vest	<b>F272</b>
Jewelry	<b>BLACK</b>
Formal Shoes (upcharge)	<b>COP</b>
Pocket Square (purchase only)	<b>PLTE</b>
Belt (purchase only)	<b>NBLT</b>

### Tan Pant Option:

Ultra Slim Fit Pants	<b>272</b>
----------------------	------------



**SCAN ME**  
for additional images



To BUY see page 5 in the JFW For Purchase Catalog



To BUY see page 9 in the JFW For Purchase Catalog



# MICHAEL KORS

## Medium Grey Performance Stretch Wedding Suit

Style 350

**U** **ULTRA SLIM FIT**  
Trim and tapered styling, fits close to the body.

**Size Scale A2** - see page 54

**Men's coat sizes:** 34-74

**Boys' coat sizes:** 3-18

**350 pant sizes:** 18-71

### Features:

- ▶ Tailored to fit all body types
- ▶ CoolMax® performance stretch fabric
- ▶ Self-framed notch lapel, side-vented, 29½" length
- ▶ Shown with ultra slim fit pants with belt loops and buttons to accommodate suspenders

### Fabric Content:

CoolMax® / Sorona® / Wool

### To order ensemble as shown:

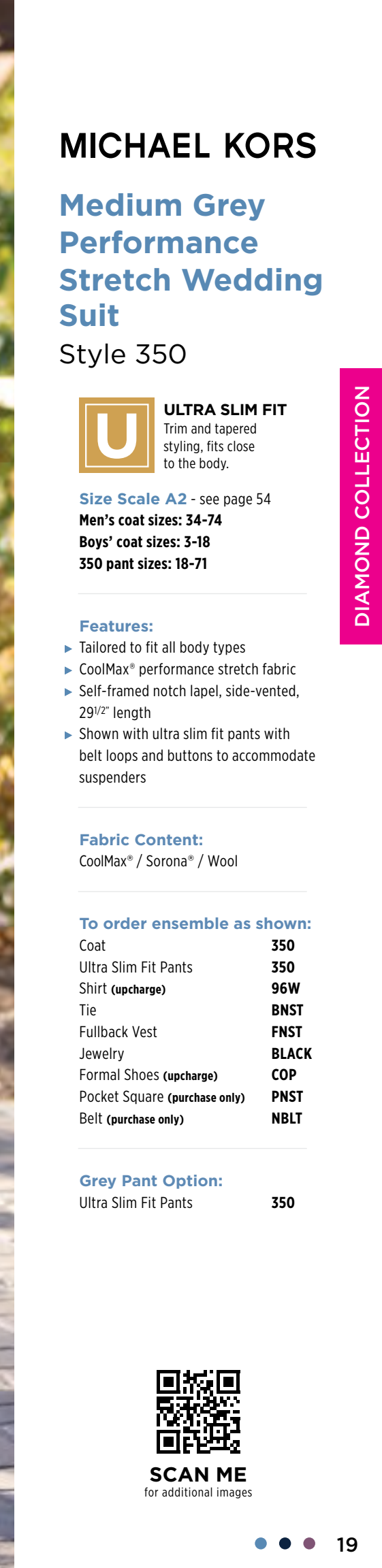
Coat	<b>350</b>
Ultra Slim Fit Pants	<b>350</b>
Shirt (upcharge)	<b>96W</b>
Tie	<b>BNST</b>
Fullback Vest	<b>FNST</b>
Jewelry	<b>BLACK</b>
Formal Shoes (upcharge)	<b>COP</b>
Pocket Square (purchase only)	<b>PNST</b>
Belt (purchase only)	<b>NBLT</b>

### Grey Pant Option:

Ultra Slim Fit Pants	<b>350</b>
----------------------	------------



**SCAN ME**  
for additional images



# MICHAEL KORS

## Blue Performance Stretch Wedding Suit

Style 302

**U** **ULTRA SLIM FIT**  
Trim and tapered styling, fits close to the body.

**Size Scale A2** - see page 54

**Men's coat sizes: 34-74**

**Boys' coat sizes: 3-18**

**302 pant sizes: 18-71**

### Features:

- ▶ Tailored to fit all body types
- ▶ CoolMax® performance stretch fabric
- ▶ Self-framed notch lapel, side-vented, 30 1/2" length
- ▶ Shown with ultra slim fit pants with belt loops and buttons to accommodate suspenders

### Fabric Content:

CoolMax® / Sorona® / Wool

### To order ensemble as shown:

Coat	<b>302</b>
Ultra Slim Fit Pants	<b>302</b>
Shirt (upcharge)	<b>96W</b>
Tie	<b>WNMB</b>
Fullback Vest	<b>FNMB</b>
Jewelry	<b>BLACK</b>
Formal Shoes (upcharge)	<b>COP</b>
Pocket Square (purchase only)	<b>PNMB</b>
Belt (purchase only)	<b>NBLT</b>

### Blue Pant Option:

Ultra Slim Fit Pants	<b>302</b>
----------------------	------------



**SCAN ME**  
for additional images



To BUY see page 7 in the JFW For Purchase Catalog



# MICHAEL KORS

## Force Performance Stretch Tuxedo

Style 981

**U** **ULTRA SLIM FIT**  
Trim and tapered styling, fits close to the body.

**Size Scale:** B - see page 54

**Men's coat sizes: 34-66**

**Boys' coat sizes: 3-18**

**921 pant sizes: 18-71**

### Features:

- ▶ Tailored to fit all body types
- ▶ CoolMax® performance stretch fabric
- ▶ Grosgrain notch lapel, side-vented, 29 1/2" length
- ▶ Grosgrain trimmed pockets and covered buttons
- ▶ Shown with ultra slim fit pants with belt loops and buttons to accommodate suspenders

### Fabric Content:

CoolMax® / Sorona® / Wool

### To order ensemble as shown:

Coat	<b>981</b>
Ultra Slim Fit Pants	<b>921</b>
Shirt (upcharge)	<b>96W</b>
Tie	<b>WXGO</b>
Fullback Vest	<b>F921</b>
Jewelry	<b>BLACK</b>
Formal Shoes (upcharge)	<b>BXS</b>
Pocket Square (purchase only)	<b>PWGO</b>

### Black Pant Option:

Ultra Slim Fit Pants	<b>921</b>
----------------------	------------



**SCAN ME**  
for additional images

DIAMOND COLLECTION

# MICHAEL KORS

## Navy Sterling Wedding Suit

Style 371

**U** **ULTRA SLIM FIT**  
Trim and tapered styling, fits close to the body.

**Size Scale:** E - see page 54

**Men's coat sizes:** 34-44

**Boys' coat sizes:** N/A

**371 pant sizes:** 27-44

**Features:**

- ▶ Self-framed notch lapel, side-vented, 30<sup>1/2</sup>" length
- ▶ Shown with ultra slim fit pants with belt loops and buttons to accommodate suspenders

**Fabric Content:**

Venetian Super 130's Wool

**Companion Coat:**

Style 372 - Navy Sterling Slim Fit Wedding Suit; see page 23

**To order ensemble as shown:**

Coat	<b>371</b>
Ultra Slim Fit Pants	<b>371</b>
Shirt (upcharge)	<b>96W</b>
Tie	<b>BNNA</b>
Fullback Vest	<b>F372</b>
Jewelry	<b>BLACK</b>
Formal Shoes (upcharge)	<b>CXS</b>
Pocket Square (purchase only)	<b>PWWH</b>
Belt (purchase only)	<b>NBLT</b>

**Navy Pant Options:**

Ultra Slim Fit Pants	<b>371</b>
Modern Slim Fit Pants	<b>372</b>



**SCAN ME**  
for additional images

AVAILABLE IN  
TWO FITS:

**ULTRA SLIM FIT**  
Shown

**SLIM FIT**  
See page 23



To BUY see page 6 in the JFW For Purchase Catalog



# MICHAEL KORS

## Navy Sterling Wedding Suit

Style 372

**S** **SLIM FIT**  
Contemporary styling with a slimming appearance.

**Size Scale:** B - see page 54

**Men's coat sizes:** 34-66

**Boys' coat sizes:** 3-18

**372 pant sizes:** 18-65

**Features:**

- ▶ Self-framed notch lapel, side-vented, 30<sup>1/2</sup>" length
- ▶ Shown with modern slim fit pants with belt loops and buttons to accommodate suspenders

**Fabric Content:**

Venetian Super 130's Wool

**Companion Coat:**

Style 371 - Navy Sterling Ultra Slim Fit Wedding Suit; see page 22

**To order ensemble as shown:**

Coat	<b>372</b>
Modern Slim Fit Pants	<b>372</b>
Shirt (upcharge)	<b>96W</b>
Tie	<b>WFSE</b>
Fullback Vest	<b>F372</b>
Jewelry	<b>BLACK</b>
Formal Shoes (upcharge)	<b>CXS</b>
Pocket Square (purchase only)	<b>PFSE</b>
Belt (purchase only)	<b>NBLT</b>

**Navy Pant Options:**

Ultra Slim Fit Pants	<b>371</b>
Modern Slim Fit Pants	<b>372</b>



**SCAN ME**  
for additional images

AVAILABLE IN  
TWO FITS:

**SLIM FIT**  
Shown

**ULTRA SLIM FIT**  
See page 22

DIAMOND COLLECTION

DIAMOND COLLECTION

# MICHAEL KORS

## Steel Grey Sterling Wedding Suit

Style 391

**U** **ULTRA SLIM FIT**  
Trim and tapered styling, fits close to the body.

**Size Scale:** E - see page 54  
**Men's coat sizes:** 34-44  
**Boys' coat sizes:** N/A  
**391 pant sizes:** 27-44

**Features:**

- ▶ Self-framed notch lapel, side-vented, 30 1/2" length
- ▶ Shown with ultra slim fit pants with belt loops and buttons to accommodate suspenders

**Fabric Content:**

Venetian Super 130's Wool

**Companion Coat:**

Style 392 - Steel Grey Sterling Slim Fit Wedding Suit; see page 25

**To order ensemble as shown:**

Coat	<b>391</b>
Ultra Slim Fit Pants	<b>391</b>
Shirt (upcharge)	<b>96W</b>
Tie	<b>WNWI</b>
Fullback Vest	<b>F392</b>
Jewelry	<b>BLACK</b>
Formal Shoes (upcharge)	<b>CXS</b>
Pocket Square (purchase only)	<b>PNWI</b>
Belt (purchase only)	<b>NBLT</b>

**Steel Grey Pant Options:**

Ultra Slim Fit Pants	<b>391</b>
Modern Slim Fit Pants	<b>392</b>



**SCAN ME**  
for additional images

AVAILABLE IN  
TWO FITS:

**ULTRA SLIM FIT**  
Shown

**SLIM FIT**  
See page 25



To BUY see page 10 in the JFW For Purchase Catalog

AVAILABLE IN  
TWO FITS:

**SLIM FIT**  
Shown

**ULTRA SLIM FIT**  
See page 24

# MICHAEL KORS

## Steel Grey Sterling Wedding Suit

Style 392

**S** **SLIM FIT**  
Contemporary styling with a slimming appearance.

**Size Scale:** B - see page 54  
**Men's coat sizes:** 34-66  
**Boys' coat sizes:** 3-18  
**392 pant sizes:** 18-65

**Features:**

- ▶ Self-framed notch lapel, side-vented, 30 1/2" length
- ▶ Shown with modern slim fit pants with belt loops and buttons to accommodate suspenders

**Fabric Content:**

Venetian Super 130's Wool

**Companion Coat:**

Style 391 - Steel Grey Sterling Ultra Slim Fit Wedding Suit; see page 24

**To order ensemble as shown:**

Coat	<b>392</b>
Modern Slim Fit Pants	<b>392</b>
Shirt (upcharge)	<b>96W</b>
Tie	<b>BNST</b>
Fullback Vest	<b>F392</b>
Jewelry	<b>BLACK</b>
Formal Shoes (upcharge)	<b>COP</b>
Pocket Square (purchase only)	<b>PNST</b>
Belt (purchase only)	<b>NBLT</b>

**Steel Grey Pant Options:**

Ultra Slim Fit Pants	<b>391</b>
Modern Slim Fit Pants	<b>392</b>



**SCAN ME**  
for additional images

DIAMOND COLLECTION

DIAMOND COLLECTION

# MICHAEL KORS

## Black Sterling Wedding Suit

Style 471

**U** **ULTRA SLIM FIT**  
Trim and tapered styling, fits close to the body.

**Size Scale:** E - see page 54

**Men's coat sizes:** 34-44

**Boys' coat sizes:** N/A

**471 pant sizes:** 27-44

### Features:

- ▶ Self-framed notch lapel, side-vented, 30<sup>1</sup>/<sub>2</sub>" length
- ▶ Shown with ultra slim fit pants with belt loops and buttons to accommodate suspenders

### Fabric Content:

Venetian Super 130's Wool

### Companion Coat:

Style 472 - Black Sterling Slim Fit Wedding Suit; see page 27

### To order ensemble as shown:

Coat	<b>471</b>
Ultra Slim Fit Pants	<b>471</b>
Shirt (upcharge)	<b>96W</b>
Tie	<b>BXBL</b>
Fullback Vest	<b>F900</b>
Jewelry	<b>BLACK</b>
Formal Shoes (upcharge)	<b>BXS</b>
Pocket Square (purchase only)	<b>PWWH</b>
Belt (purchase only)	<b>NBLT</b>

### Black Pant Options:

Ultra Slim Fit Pants	<b>471</b>
Modern Slim Fit Pants	<b>472</b>



**SCAN ME**  
for additional images

AVAILABLE IN  
TWO FITS:  
**ULTRA SLIM FIT**  
Shown  
**SLIM FIT**  
See page 27



# MICHAEL KORS

## Black Sterling Wedding Suit

Style 472

**S** **SLIM FIT**  
Contemporary styling with a slimming appearance.

**Size Scale:** B - see page 54

**Men's coat sizes:** 34-66

**Boys' coat sizes:** 3-18

**472 pant sizes:** 18-65

### Features:

- ▶ Self-framed notch lapel, side-vented, 30<sup>1</sup>/<sub>2</sub>" length
- ▶ Shown with modern slim fit pants with belt loops and buttons to accommodate suspenders

### Fabric Content:

Venetian Super 130's Wool

### Companion Coat:

Style 471 - Black Sterling Ultra Slim Fit Wedding Suit; see page 26

### To order ensemble as shown:

Coat	<b>472</b>
Modern Slim Fit Pants	<b>472</b>
Shirt (upcharge)	<b>96W</b>
Tie	<b>BXBL</b>
Fullback Vest	<b>F900</b>
Jewelry	<b>BLACK</b>
Formal Shoes (upcharge)	<b>BXS</b>
Pocket Square (purchase only)	<b>PWWH</b>
Belt (purchase only)	<b>NBLT</b>

### Black Pant Options:

Ultra Slim Fit Pants	<b>471</b>
Modern Slim Fit Pants	<b>472</b>



**SCAN ME**  
for additional images

AVAILABLE IN  
TWO FITS:  
**SLIM FIT**  
Shown  
**ULTRA SLIM FIT**  
See page 26



DIAMOND COLLECTION

DIAMOND COLLECTION

# MICHAEL KORS

## Berkeley Tuxedo Style 991

**U** **ULTRA SLIM FIT**  
Trim and tapered styling, fits close to the body.

**Size Scale:** E - see page 54  
**Men's coat sizes:** 34-44  
**Boys' coat sizes:** N/A  
**991 pant sizes:** 18-59

### Features:

- ▶ Grosgrain notch lapel, side-vented, 30<sup>1</sup>/<sub>2</sub>" length
- ▶ Grosgrain trimmed pockets
- ▶ Shown with ultra slim fit pants with no stripe

### Fabric Content:

Venetian Super 130's Wool

### Companion Coat:

Style 990 - Berkeley Slim Fit; see page 29

### To order ensemble as shown:

Coat	<b>991</b>
Ultra Slim Fit Pants	<b>991</b>
Shirt (upcharge)	<b>96W</b>
Tie	<b>BXBL</b>
Fullback Vest	<b>F900</b>
Jewelry	<b>BLACK</b>
Formal Shoes (upcharge)	<b>BDS</b>
Pocket Square (purchase only)	<b>PWWH</b>

### Black Pant Options:

Ultra Slim Fit Pants	<b>991</b>
Modern Slim Fit Pants	<b>990</b>



**SCAN ME**  
for additional images

AVAILABLE IN  
TWO FITS:

**ULTRA SLIM FIT**  
Shown

**SLIM FIT**  
See page 29

# MICHAEL KORS

## Berkeley Tuxedo Style 990

**S** **SLIM FIT**  
Contemporary styling with a slimming appearance.

**Size Scale:** B - see page 54  
**Men's coat sizes:** 34-66  
**Boys' coat sizes:** 3-18  
**990 pant sizes:** 18-65

### Features:

- ▶ Grosgrain notch lapel, side-vented, 30<sup>1</sup>/<sub>2</sub>" length
- ▶ Grosgrain trimmed pockets
- ▶ Shown with modern slim fit pants with grosgrain piping on the leg

### Fabric Content:

Venetian Super 130's Wool

### Companion Coat:

Style 991 - Berkeley Ultra Slim Fit; see page 28

### To order ensemble as shown:

Coat	<b>990</b>
Modern Slim Fit Pants	<b>990</b>
Shirt (upcharge)	<b>96W</b>
Tie	<b>BXBL</b>
Fullback Vest	<b>F900</b>
Jewelry	<b>BLACK</b>
Formal Shoes (upcharge)	<b>BDS</b>
Pocket Square (purchase only)	<b>PWWH</b>

### Black Pant Options:

Ultra Slim Fit Pants	<b>991</b>
Modern Slim Fit Pants	<b>990</b>



**SCAN ME**  
for additional images



DIAMOND COLLECTION

DIAMOND COLLECTION



# ALLURE MEN

## Sand Brunswick Suit

Style 202

**U** **ULTRA SLIM FIT**  
Trim and tapered styling, fits close to the body.

**Size Scale:** B - see page 54

**Men's coat sizes:** 34-66

**Boys' coat sizes:** 3-18

**202 pant sizes:** 18-65

### Features:

- ▶ Tailored to fit all body types
- ▶ Self-framed notch lapel, side-vented, 30" length
- ▶ Shown with ultra slim fit pants with belt loops and buttons to accommodate suspenders

### Fabric Content:

60/40 Super 130's Wool Blend

### To order ensemble as shown:

Coat	<b>202</b>
Ultra Slim Fit Pants	<b>202</b>
Shirt (upcharge)	<b>96W</b>
Tie	<b>WFWI</b>
Fullback Vest	<b>F202</b>
Jewelry	<b>BLACK</b>
Formal Shoes (upcharge)	<b>COP</b>
Pocket Square (purchase only)	<b>PFWI</b>
Belt (purchase only)	<b>NBLT</b>

### Sand Pant Option:

Ultra Slim Fit Pants	<b>202</b>
----------------------	------------



**SCAN ME**  
for additional images



To BUY see page 11 in the JFW For Purchase Catalog

# ALLURE MEN

## Heather Grey Clayton Suit

Style 262

**U** **ULTRA SLIM FIT**  
Trim and tapered styling, fits close to the body.

**Size Scale:** A2 - see page 54

**Men's coat sizes:** 34-74

**Boys' coat sizes:** 3-18

**262 pant sizes:** 18-71

### Features:

- ▶ Tailored to fit all body types
- ▶ Self-framed notch lapel, side-vented, 29 7/8" length
- ▶ Shown with ultra slim fit pants with belt loops and buttons to accommodate suspenders

### Fabric Content:

Super 130's Wool

### To order ensemble as shown:

Coat	<b>262</b>
Ultra Slim Fit Pants	<b>262</b>
Shirt (upcharge)	<b>96W</b>
Tie	<b>BXNA</b>
Fullback Vest	<b>F262</b>
Jewelry	<b>BLACK</b>
Formal Shoes (upcharge)	<b>CXS</b>
Pocket Square (purchase only)	<b>PWNA</b>

### Heather Grey Pant Option:

Ultra Slim Fit Pants	<b>262</b>
----------------------	------------



**SCAN ME**  
for additional images



**Cobalt Blue  
Tribeca Tuxedo**  
Style 211

**U** **ULTRA SLIM FIT**  
Trim and tapered styling, fits close to the body.

**Size Scale:** D - see page 54  
**Men's coat sizes:** 34-60  
**Boys' coat sizes:** 3-18  
**211 pant sizes:** 18-59

**Features:**

- ▶ Tailored to fit all body types
- ▶ Black satin peak lapel, side-vented, 30" length
- ▶ Black satin double besom pockets
- ▶ Shown with ultra slim fit pants with no stripe

**Fabric Content:**

Super 120's Wool

**To order ensemble as shown:**

Coat	<b>211</b>
Ultra Slim Fit Pants	<b>211</b>
Shirt (upcharge)	<b>96W</b>
Tie	<b>BXBL</b>
Fullback Vest	<b>EXBL</b>
Jewelry	<b>BLACK</b>
Formal Shoes (upcharge)	<b>BDS</b>
Pocket Square (purchase only)	<b>PWWH</b>

**Cobalt Blue Pant Option:**

Ultra Slim Fit Pants	<b>211</b>
----------------------	------------

**Black Pant Options:**

Ultra Slim Fit Pants	<b>991</b>
Modern Slim Fit Pants	<b>990</b>



**SCAN ME**  
for additional images



**Indigo Blue  
Lane Tuxedo**  
Style 221

**U** **ULTRA SLIM FIT**  
Trim and tapered styling, fits close to the body.

**Size Scale:** B - see page 54  
**Men's coat sizes:** 34-66  
**Boys' coat sizes:** 3-18  
**221 pant sizes:** 18-65

**Features:**

- ▶ Tailored to fit all body types
- ▶ Satin-edged peak lapel, side-vented, 29 1/4" length
- ▶ Shown with ultra slim fit pants with no stripe

**Fabric Content:**

Super 120's Wool

**To order ensemble as shown:**

Coat	<b>221</b>
Ultra Slim Fit Pants	<b>221</b>
Shirt (upcharge)	<b>96W</b>
Tie	<b>BXCP</b>
Fullback Vest	<b>EXCP</b>
Jewelry	<b>BLACK</b>
Formal Shoes (upcharge)	<b>CXS</b>
Pocket Square (purchase only)	<b>PWCP</b>

**Indigo Blue Pant Option:**

Ultra Slim Fit Pants	<b>221</b>
----------------------	------------



**SCAN ME**  
for additional images



# KENNETH COLE

## Burgundy Empire Tuxedo

Style 201

**U** **ULTRA SLIM FIT**  
Trim and tapered styling, fits close to the body.

**Size Scale:** D - see page 54

**Men's coat sizes:** 34-60

**Boys' coat sizes:** 3-18

**991 pant sizes:** 18-59

### Features:

- ▶ Tailored to fit all body types
- ▶ Black satin peak lapel, side-vented, 30<sup>1</sup>/<sub>2</sub>" length
- ▶ Black satin double besom pockets
- ▶ Shown with black ultra slim fit pants with no stripe

### Fabric Content:

Super 120's Wool

### To order ensemble as shown:

Coat	<b>201</b>
Ultra Slim Fit Pants	<b>991</b>
Shirt (upcharge)	<b>96W</b>
Tie	<b>BSAT</b>
Jewelry	<b>BLACK</b>
Formal Shoes (upcharge)	<b>BDS</b>
Pocket Square (purchase only)	<b>PWWH</b>

### Black Pant Options:

Ultra Slim Fit Pants	<b>991</b>
Modern Slim Fit Pants	<b>990</b>



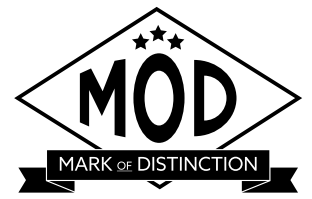
**SCAN ME**  
for additional images



**RENT OR BUY**

To BUY see page 28 in the JFW For Purchase Catalog

**LIMITED SIZE SCALE**



## White/Silver Aries Paisley Tuxedo

Style 172

**S** **SLIM FIT**  
Contemporary styling with a slimming appearance.

**Size Scale:** F - see page 54

**Men's coat sizes:** 34-50 (even sizes only)

**Boys' coat sizes:** 14-18 (even sizes only)

**N11P pant sizes:** 26-44 (even sizes only)

### Features:

- ▶ **Limited size scale**
- ▶ White satin shawl lapel, side-vented, 30<sup>1</sup>/<sub>2</sub>" length
- ▶ Fabric covered buttons
- ▶ Shown with Black Euro Slim Stretch Suit Pants for purchase

### Fabric Content:

100% Polyester

### To order ensemble as shown:

Coat	<b>172</b>
Euro Slim Pants (purchase only)	<b>N11P</b>
Shirt (upcharge)	<b>96W</b>
Tie	<b>WFPT</b>
Jewelry	<b>BLACK</b>
Formal Shoes (purchase only)	<b>NSSKS</b>
Pocket Square (purchase only)	<b>PFPT</b>

### White Pant Options:

Euro Slim Pants (purchase only)	<b>N17P</b>
Modern Slim Fit Pants	<b>750</b>

### Black Pant Options:

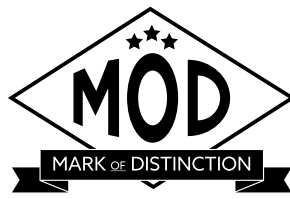
Euro Slim Pants (purchase only)	<b>N11P</b>
Ultra Slim Fit Pants	<b>921</b>
Modern Slim Fit Pants	<b>990</b>



**SCAN ME**  
for additional images

DIAMOND COLLECTION

DIAMOND COLLECTION



## Granite Aries Paisley Tuxedo

Style 192



**SLIM FIT**  
Contemporary styling with a slimming appearance.

**Size Scale:** G - see page 54  
**Men's coat sizes:** 34-66 (even sizes only)  
**Boys' coat sizes:** 3-18 (even sizes only)  
**N11P pant sizes:** 26-44 (even sizes only)

### Features:

- ▶ Black satin shawl lapel, side-vented, 30 1/2" length
- ▶ Fabric covered buttons
- ▶ Shown with Black Euro Slim Stretch Suit Pants for purchase

### Fabric Content:

100% Polyester

### To order ensemble as shown:

Coat	<b>192</b>
Euro Slim Pants (purchase only)	<b>N11P</b>
Shirt (upcharge)	<b>96W</b>
Tie	<b>BSAT</b>
Jewelry	<b>BLACK</b>
Formal Shoes (purchase only)	<b>NCSSS</b>
Pocket Square (purchase only)	<b>PWBL</b>

### Black Pant Options:

Euro Slim Pants (purchase only)	<b>N11P</b>
Ultra Slim Fit Pants	<b>921</b>
Modern Slim Fit Pants	<b>990</b>



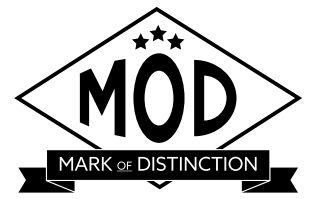
**SCAN ME**  
for additional images



To BUY see page 30 in the JFW For Purchase Catalog



To BUY see page 29 in the JFW For Purchase Catalog



## Black Aries Paisley Tuxedo

Style 182



**SLIM FIT**  
Contemporary styling with a slimming appearance.

**Size Scale:** G - see page 54  
**Men's coat sizes:** 34-66 (even sizes only)  
**Boys' coat sizes:** 3-18 (even sizes only)  
**N11P pant sizes:** 26-44 (even sizes only)

### Features:

- ▶ Black satin shawl lapel, side-vented, 30 1/2" length
- ▶ Fabric covered buttons
- ▶ Shown with Black Euro Slim Stretch Suit Pants for purchase

### Fabric Content:

100% Polyester

### To order ensemble as shown:

Coat	<b>182</b>
Euro Slim Pants (purchase only)	<b>N11P</b>
Shirt (upcharge)	<b>96W</b>
Tie	<b>BSAT</b>
Jewelry	<b>BLACK</b>
Formal Shoes (purchase only)	<b>NBSKS</b>
Pocket Square (purchase only)	<b>PWWH</b>

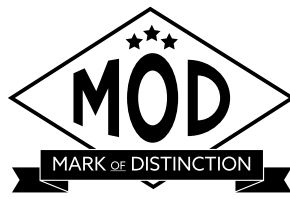
### Black Pant Options:

Euro Slim Pants (purchase only)	<b>N11P</b>
Ultra Slim Fit Pants	<b>921</b>
Modern Slim Fit Pants	<b>990</b>



**SCAN ME**  
for additional images





## Apple Red Aries Paisley Tuxedo

Style 122



**SLIM FIT**  
Contemporary styling with a slimming appearance.

**Size Scale:** F - see page 54

**Men's coat sizes:** 34-50 (even sizes only)

**Boys' coat sizes:** 14-18 (even sizes only)

**N11P pant sizes:** 26-44 (even sizes only)

### Features:

- ▶ **Limited size scale**
- ▶ Black satin shawl lapel, side-vented, 30<sup>1</sup>/<sub>2</sub>" length
- ▶ Fabric covered buttons
- ▶ Shown with Black Euro Slim Stretch Suit Pants for purchase

### Fabric Content:

100% Polyester

### To order ensemble as shown:

Coat	<b>122</b>
Euro Slim Pants (purchase only)	<b>N11P</b>
Shirt (upcharge)	<b>96W</b>
Tie	<b>BSAT</b>
Jewelry	<b>BLACK</b>
Formal Shoes (purchase only)	<b>NCSSS</b>
Pocket Square (purchase only)	<b>PWBL</b>

### Black Pant Options:

Euro Slim Pants (purchase only)	<b>N11P</b>
Ultra Slim Fit Pants	<b>921</b>
Modern Slim Fit Pants	<b>990</b>

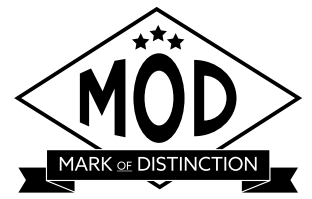


**SCAN ME**  
for additional images

LIMITED  
SIZE SCALE



LIMITED  
SIZE SCALE



## Cobalt Aries Paisley Tuxedo

Style 132



**SLIM FIT**  
Contemporary styling with a slimming appearance.

**Size Scale:** F - see page 54

**Men's coat sizes:** 34-50 (even sizes only)

**Boys' coat sizes:** 14-18 (even sizes only)

**N11P pant sizes:** 26-44 (even sizes only)

### Features:

- ▶ **Limited size scale**
- ▶ Black satin shawl lapel, side-vented, 30<sup>1</sup>/<sub>2</sub>" length
- ▶ Fabric covered buttons
- ▶ Shown with Black Euro Slim Stretch Suit Pants for purchase

### Fabric Content:

100% Polyester

### To order ensemble as shown:

Coat	<b>132</b>
Euro Slim Pants (purchase only)	<b>N11P</b>
Shirt (upcharge)	<b>96W</b>
Tie	<b>BSAT</b>
Jewelry	<b>BLACK</b>
Formal Shoes (purchase only)	<b>NBLVS</b>
Pocket Square (purchase only)	<b>PWBL</b>

### Black Pant Options:

Euro Slim Pants (purchase only)	<b>N11P</b>
Ultra Slim Fit Pants	<b>921</b>
Modern Slim Fit Pants	<b>990</b>



**SCAN ME**  
for additional images

DIAMOND COLLECTION

**Tan Havana Suit**  
Style 252

**S** **SLIM FIT**  
Contemporary styling  
with a slimming  
appearance.

**Size Scale:** B2 - see page 54  
**Men's coat sizes:** 34-66  
**Boys' coat sizes:** 3-18  
**252 pant sizes:** 18-65

**Features:**

- ▶ Self notch lapel, bone buttons, side-vented, 30" length
- ▶ Shown with modern slim fit pants with no stripe

**Fabric Content:**

Ultra Fine Poly / Wool Blend

**To order ensemble as shown:**

Coat	<b>252</b>
Modern Slim Fit Pants	<b>252</b>
Shirt (upcharge)	<b>96W</b>
Tie	<b>WRCP</b>
Fullback Vest	<b>F252</b>
Jewelry	<b>BLACK</b>
Formal Shoes (upcharge)	<b>CXS</b>
Pocket Square (purchase only)	<b>PKWH</b>

**Tan Pant Options:**

Ultra Slim Fit Pants	<b>251</b>
Modern Slim Fit Pants	<b>252</b>



**Heather Grey Aspen Tuxedo**  
Style 362

**S** **SLIM FIT**  
Contemporary styling  
with a slimming  
appearance.

**Size Scale:** B - see page 54  
**Men's coat sizes:** 34-66  
**Boys' coat sizes:** 3-18  
**362 pant sizes:** 18-65

**Features:**

- ▶ Satin-edged notch lapel, side-vented, 30 1/2" length
- ▶ Shown with modern slim fit pants with no stripe

**Fabric Content:**

100% Wool

**To order ensemble as shown:**

Coat	<b>362</b>
Modern Slim Fit Pants	<b>362</b>
Shirt (upcharge)	<b>96W</b>
Tie	<b>BXWH</b>
Fullback Vest	<b>F362</b>
Jewelry	<b>BLACK</b>
Formal Shoes (upcharge)	<b>CXS</b>
Pocket Square (purchase only)	<b>PWWH</b>

**Grey Pant Options:**

Ultra Slim Fit Pants	<b>361</b>
Modern Slim Fit Pants	<b>362</b>

**Grey Portofino Tuxedo**

Style 301



**SLIM FIT**  
Contemporary styling with a slimming appearance.

**Size Scale:** H - see page 54  
**Men's coat sizes:** 34-56  
**Boys' coat sizes:** 14-18  
**850 pant sizes:** 18-71

**Features:**

- ▶ **Limited size scale**
- ▶ Black satin peak lapel, non-vented, 30" length
- ▶ Black satin double besom pockets
- ▶ Shown with modern slim fit pants with a beaded stripe

**Fabric Content:**

55/45 Super Fine Wool Blend

**To order ensemble as shown:**

Coat	<b>301</b>
Modern Slim Fit Pants	<b>850</b>
Shirt (upcharge)	<b>96W</b>
Tie	<b>WKBL</b>
Fullback Vest	<b>F900</b>
Jewelry	<b>BLACK</b>
Formal Shoes (upcharge)	<b>BDS</b>
Pocket Square (purchase only)	<b>PSWH</b>

**Black Pant Options:**

Ultra Slim Fit Pants	<b>991</b>
Modern Slim Fit Pants	<b>850</b>

LIMITED SIZE SCALE



stephengeoffrey

**Cyprus Tuxedo**  
Style 822



**MODERN FIT**  
Fashion-forward styling with a flattering appearance.

**Size Scale:** B2 - see page 54  
**Men's coat sizes:** 34-66  
**Boys' coat sizes:** 3-18  
**850 pant sizes:** 18-71

**Features:**

- ▶ Satin shawl lapel, non-vented, 31 1/2" length
- ▶ Shown with modern slim fit pants with a beaded stripe

**Fabric Content:**

100% Tropical Worsted Wool

**To order ensemble as shown:**

Coat	<b>822</b>
Modern Slim Fit Pants	<b>850</b>
Shirt (upcharge)	<b>76W</b>
Tie	<b>WSKG</b>
Fullback Vest	<b>SYKG</b>
Jewelry	<b>BLACK</b>
Formal Shoes (upcharge)	<b>BDS</b>
Pocket Square (purchase only)	<b>PSKG</b>

**Black Pant Option:**

Modern Slim Fit Pants	<b>850</b>
-----------------------	------------



stephengeoffrey

## Emerson Tuxedo

Style 852



**MODERN FIT**  
Fashion-forward styling with a flattering appearance.

**Size Scale:** H - see page 54

**Men's coat sizes:** 34-56

**Boys' coat sizes:** 14-18

**850 pant sizes:** 18-71

### Features:

- ▶ **Limited size scale**
- ▶ Grosgrain notch lapel, non-vented, 3 1/2" length
- ▶ Grosgrain buttons
- ▶ Shown with modern slim fit pants with a beaded stripe

### Fabric Content:

100% Tropical Worsted Wool

### To order ensemble as shown:

Coat	<b>852</b>
Modern Slim Fit Pants	<b>850</b>
Shirt (upcharge)	<b>96W</b>
Tie	<b>WKLA</b>
Fullback Vest	<b>HRLA</b>
Jewelry	<b>BLACK</b>
Formal Shoes (upcharge)	<b>BDS</b>
Pocket Square (purchase only)	<b>PKLA</b>

### Black Pant Option:

Modern Slim Fit Pants	<b>850</b>
-----------------------	------------



LIMITED  
SIZE SCALE



LIMITED  
SIZE SCALE



stephengeoffrey

## Black Troy Tuxedo

Style 802



**MODERN FIT**  
Fashion-forward styling with a flattering appearance.

**Size Scale:** H - see page 54

**Men's coat sizes:** 34-56

**Boys' coat sizes:** 14-18

**850 pant sizes:** 18-71

### Features:

- ▶ **Limited size scale**
- ▶ Satin notch lapel, non-vented, 3 1/2" length
- ▶ Shown with modern slim fit pants with a beaded stripe

### Fabric Content:

100% Worsted Wool

### To order ensemble as shown:

Coat	<b>802</b>
Modern Slim Fit Pants	<b>850</b>
Shirt (upcharge)	<b>96W</b>
Tie	<b>WRCO</b>
Fullback Vest	<b>HRCO</b>
Jewelry	<b>BLACK</b>
Formal Shoes (upcharge)	<b>BDS</b>
Pocket Square (purchase only)	<b>PKCO</b>

### Black Pant Option:

Modern Slim Fit Pants	<b>850</b>
-----------------------	------------



PLATINUM COLLECTION

PLATINUM COLLECTION



**Waverly Tuxedo**  
Style 751

**U** **ULTRA SLIM FIT**  
Trim and tapered styling, fits close to the body.

**Size Scale:** D - see page 54  
**Men's coat sizes:** 34-60  
**Boys' coat sizes:** 3-18  
**991 pant sizes:** 18-59

**Features:**

- ▶ Tailored to fit all body types
- ▶ Self shawl lapel edged in black satin, center-vented, 30" length
- ▶ Shown with black ultra slim fit pants with no stripe

**Fabric Content:**  
100% Polyester

**To order ensemble as shown:**

Coat	<b>751</b>
Ultra Slim Fit Pants	<b>991</b>
Shirt (upcharge)	<b>96W</b>
Tie	<b>BXBL</b>
Fullback Vest	<b>EXBL</b>
Jewelry	<b>BLACK</b>
Formal Shoes (upcharge)	<b>BDS</b>
Pocket Square (purchase only)	<b>PWBL</b>

**White Pant Option:**

Modern Slim Fit Pants **750**

**Black Pant Options:**

Ultra Slim Fit Pants **991**  
Modern Slim Fit Pants **850**



**White Troy Tuxedo**  
Style 712

**M** **MODERN FIT**  
Fashion-forward styling with a flattering appearance.

**Size Scale:** B - see page 54  
**Men's coat sizes:** 34-66  
**Boys' coat sizes:** 3-18  
**750 pant sizes:** 18-65

**Features:**

- ▶ Satin notch lapel, non-vented, 31 1/2" length
- ▶ Shown with modern slim fit pants with a beaded stripe

**Fabric Content:**  
100% Polyester

**To order ensemble as shown:**

Coat	<b>712</b>
Modern Slim Fit Pants	<b>750</b>
Shirt (upcharge)	<b>96W</b>
Tie	<b>BXWH</b>
Fullback Vest	<b>EXWH</b>
Jewelry	<b>PEARL</b>
Formal Shoes (upcharge)	<b>WAS</b>
Pocket Square (purchase only)	<b>PWWH</b>

**White Pant Option:**

Modern Slim Fit Pants **750**





stephengeoffrey

## Ivory Classic Shawl Tuxedo

Style 601



### SLIM FIT

Contemporary styling with a slimming appearance.

**Size Scale:** B - see page 54

**Men's coat sizes:** 34-66

**Boys' coat sizes:** 3-18

**991 pant sizes:** 18-59

### Features:

- ▶ Self shawl lapel, side-vented, 30<sup>1/2</sup>" length
- ▶ Shown with black ultra slim fit pants with no stripe

### Fabric Content:

100% Polyester

### To order ensemble as shown:

Coat	<b>601</b>
Ultra Slim Fit Pants	<b>991</b>
Shirt (upcharge)	<b>96W</b>
Tie	<b>BSAT</b>
Sash	<b>CUMB</b>
Jewelry	<b>BLACK</b>
Formal Shoes (upcharge)	<b>BDS</b>
Pocket Square (purchase only)	<b>PWBL</b>

### Ivory Pant Option:

Modern Slim Fit Pants **650**

### Black Pant Options:

Ultra Slim Fit Pants **991**

Modern Slim Fit Pants **850**



To BUY see page 27 in the JFW For Purchase Catalog



stephengeoffrey

## Ivory Troy Tuxedo

Style 602



### MODERN FIT

Fashion-forward styling with a flattering appearance.

**Size Scale:** B2 - see page 54

**Men's coat sizes:** 34-66

**Boys' coat sizes:** 3-18

**650 pant sizes:** 18-65

### Features:

- ▶ Satin notch lapel, non-vented, 31<sup>1/2</sup>" length
- ▶ Shown with modern slim fit pants with a beaded stripe

### Fabric Content:

100% Polyester

### To order ensemble as shown:

Coat	<b>602</b>
Modern Slim Fit Pants	<b>650</b>
Shirt (upcharge)	<b>96W</b>
Tie	<b>WRGO</b>
Fullback Vest	<b>HRGO</b>
Jewelry	<b>BLACK</b>
Formal Shoes (upcharge)	<b>COP</b>
Pocket Square (purchase only)	<b>PKGO</b>

### Ivory Pant Option:

Modern Slim Fit Pants **650**

PLATINUM COLLECTION

PLATINUM COLLECTION



## Classic Notch Tuxedo

Style 820



### TRADITIONAL FIT

A classic, fuller cut tuxedo.

**Size Scale:** A - see page 54;

expanded sizes available

**Men's coat sizes: 34-74**

**Boys' coat sizes: 2-18**

**850 pant sizes: 18-71**

### Features:

- ▶ Satin notch lapel, non-vented, 31½" length
- ▶ Shown with modern slim fit pants with a beaded stripe

### Fabric Content:

100% Worsted Wool

### To order ensemble as shown:

Coat	<b>820</b>
Modern Slim Fit Pants	<b>850</b>
Shirt	<b>85W</b>
Tie	<b>BSAT</b>
Sash	<b>CUMB</b>
Jewelry	<b>BLACK</b>
Formal Shoes (upcharge)	<b>BDS</b>
Pocket Square (purchase only)	<b>PSWH</b>

### Black Pant Option:

Modern Slim Fit Pants	<b>850</b>
-----------------------	------------



To BUY see page 27 in the JFW For Purchase Catalog

## White Classic Shawl Tuxedo

Style 701



### SLIM FIT

Contemporary styling with a slimming appearance.

**Size Scale:** B2 - see page 54

**Men's coat sizes: 34-66**

**Boys' coat sizes: 3-18**

**850 pant sizes: 18-71**

### Features:

- ▶ Self shawl lapel, flap pockets, non-vented, 30" length
- ▶ Shown with black modern slim fit pants with a beaded stripe

### Fabric Content:

100% Polyester

### To order ensemble as shown:

Coat	<b>701</b>
Modern Slim Fit Pants	<b>850</b>
Shirt	<b>85W</b>
Tie	<b>BSAT</b>
Sash	<b>CUMB</b>
Jewelry	<b>BLACK</b>
Formal Shoes (upcharge)	<b>BDS</b>
Pocket Square (purchase only)	<b>PSBL</b>

### White Pant Option:

Modern Slim Fit Pants	<b>750</b>
-----------------------	------------

### Black Pant Option:

Modern Slim Fit Pants	<b>850</b>
-----------------------	------------

## Classic Peak Tuxedo

Style 880



### TRADITIONAL FIT

A classic, fuller cut tuxedo.

**Size Scale:** A - see page 54;

expanded sizes available

**Men's coat sizes: 34-74**

**Boys' coat sizes: 2-18**

**850 pant sizes: 18-71**

### Features:

- ▶ Satin peak lapel, center-vented, 31½" length
- ▶ Shown with modern slim fit pants with a beaded stripe

### Fabric Content:

100% Worsted Wool

### To order ensemble as shown:

Coat	<b>880</b>
Modern Slim Fit Pants	<b>850</b>
Shirt	<b>85W</b>
Tie	<b>BSAT</b>
Sash	<b>CUMB</b>
Jewelry	<b>BLACK</b>
Formal Shoes (upcharge)	<b>BDS</b>
Pocket Square (purchase only)	<b>PSWH</b>

### Black Pant Option:

Modern Slim Fit Pants **850**



## Classic Peak Fulldress Tuxedo

Style 588



### TRADITIONAL FIT

A classic, fuller cut tuxedo.

**Size Scale:** D - see page 54

**Men's coat sizes: 34-60**

**Boys' coat sizes: 3-18**

**850 pant sizes: 18-71**

### Features:

- ▶ Six-button fulldress styling
- ▶ Satin peak lapel, center-vented tail, 42" length
- ▶ Shown with modern slim fit pants with a beaded stripe

### Fabric Content:

100% Tropical Worsted Wool

### To order ensemble as shown:

Coat	<b>588</b>
Modern Slim Fit Pants	<b>850</b>
Shirt	<b>36W</b>
Tie	<b>BPIQ</b>
Vest	<b>VPIQ</b>
Jewelry	<b>PEARL</b>
Formal Shoes (upcharge)	<b>BDS</b>
Pocket Square (purchase only)	<b>PSWH</b>

### Black Pant Option:

Modern Slim Fit Pants **850**



# SIZE SCALE REFERENCE GUIDE

**Coat Sizing Scales:** Use these sizing scales as guides to see which styles are available in a particular size.

SCALE A	
<b>MEN'S</b>	
Regular	34-74
Portly Regular	40-60
Short	34-60
Long	36-74
Extra Long	38-66
<b>BOYS'</b>	
Regular	2-18
Husky	8-18
<b>Coats available in this scale:</b>	
820 page 50	880 page 52

SCALE A2					
<b>MEN'S</b>					
Regular	34-74				
Short	34-60				
Long	36-74				
Extra Long	38-66				
<b>BOYS'</b>					
Regular	3-18				
Husky	8-16				
<b>Coats available in this scale:</b>					
262 page 31	272 page 18	302 page 20	350 page 19	421 page 17	921 page 16

SCALE B					
<b>MEN'S</b>					
Regular	34-66				
Short	34-56				
Long	34-66				
Extra Long	38-56				
<b>BOYS'</b>					
Regular	3-18				
Husky	8-16				
<b>Coats available in this scale:</b>					
202 page 30	221 page 33	362 page 41	372 page 23	392 page 25	472 page 27
601 page 48	712 page 47	981 page 21	990 page 29		

SCALE B2			
<b>MEN'S</b>			
Regular	34-66		
Short	34-56		
Long	36-66		
Extra Long	38-56		
<b>BOYS'</b>			
Regular	3-18		
Husky	8-16		
<b>Coats available in this scale:</b>			
252 page 40	602 page 49	701 page 51	822 page 43

SCALE D			
<b>MEN'S</b>			
Regular	34-60		
Short	34-50		
Long	36-60		
Extra Long	38-50		
<b>BOYS'</b>			
Regular	3-18		
Husky	N/A		
<b>Coats available in this scale:</b>			
201 page 34	211 page 32	588 page 53	751 page 46

**Note:** In size scale D, coat style 588 is available up to 68L and 68R. (All other sizing in size scale D applies.)

SCALE E			
<b>MEN'S</b>			
Regular	34-44		
Short	34-44		
Long	34-44		
Extra Long	38-44		
<b>BOYS'</b>			
Regular	N/A		
Husky	N/A		
<b>Coats available in this scale:</b>			
371 page 22	391 page 24	471 page 26	991 page 28

**Note:** 371, 391 and 471 pants available in sizes 27-44. 991 pant available in sizes 18-59.

SCALE F		
<b>MEN'S</b>		
Regular	34-50	
Short	34-50	
Long	34-50	
Extra Long	38-50	
<b>BOYS'</b>		
Regular	14-18	
Husky	N/A	
<b>Coats available in this scale:</b>		
122 page 38	132 page 39	172 page 35

**Note:** Even sizes only.

SCALE G	
<b>MEN'S</b>	
Regular	34-66
Short	34-56
Long	34-66
Extra Long	38-56
<b>BOYS'</b>	
Regular	3-18
Husky	N/A
<b>Coats available in this scale:</b>	
182 page 37	192 page 36

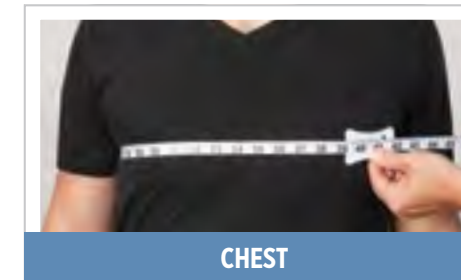
**Note:** Even sizes only.

SCALE H		
<b>MEN'S</b>		
Regular	34-56	
Short	34-56	
Long	36-56	
Extra Long	38-56	
<b>BOYS'</b>		
Regular	14-18	
Husky	N/A	
<b>Coats available in this scale:</b>		
301 page 42	802 page 45	852 page 44

# MEASURING TECHNIQUES

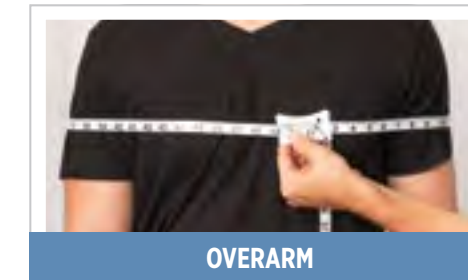
**NO LOOSE MEASUREMENTS OR FINGERS UNDER THE MEASURING TAPE**

Always record the customer's height & weight, as well as his fit preference (regular or tighter fit)



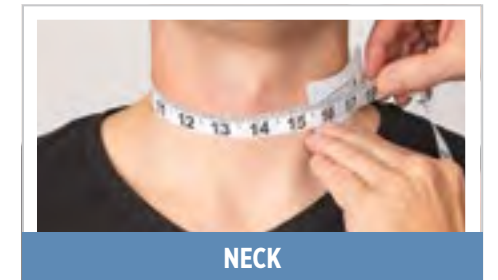
CHEST

- Lift arms
- Place tape around broadest part of chest
- Lower arms to side and relax
- Measure from side to ensure tape is level



OVERARM

- Arms relaxed by side
- Place tape around broadest part of chest and arms
- Measure from side to ensure tape is level



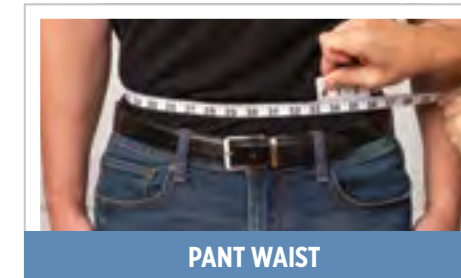
NECK

- Measure around neck where collar will button
- Add 1" to measurement for neck size



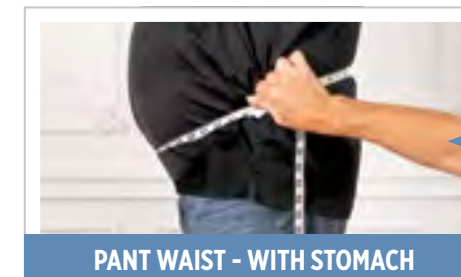
HIP

- Remove items from pockets
- Stand to side and measure broadest part of hip and rear



PANT WAIST

- Measure where pants will be worn (1" under the navel is ideal)



PANT WAIST - WITH STOMACH

- Measure below the stomach if that's where the pants will be worn
- Pull tape snug for this measurement



STOMACH

- Measure widest part of customer's stomach
- Helps determine shirt and coat size on larger customers
- DO NOT record as the waist measurement

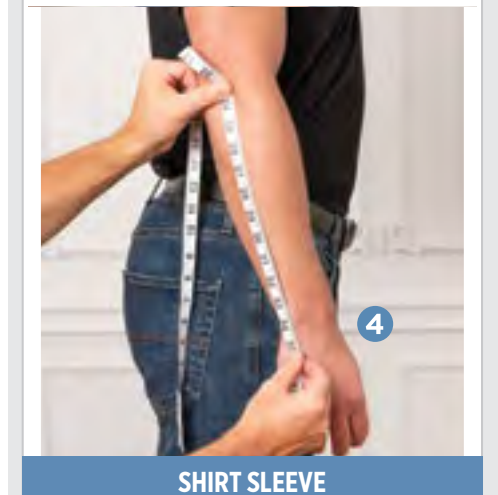
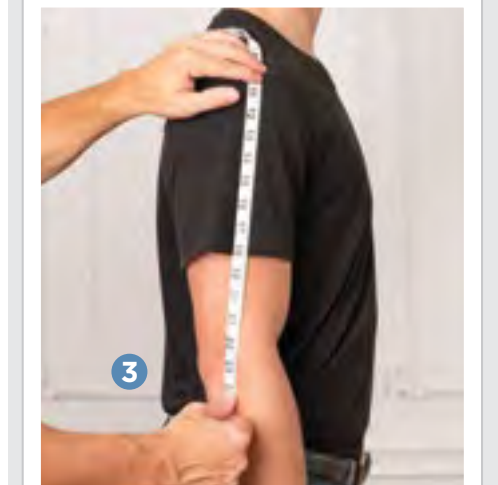
**SIZING TIPS**

**PANT SIZING**

- **Hip measurement - 6** = smallest pant waist (Ex. 40" hip - 6" = 34" waist)

**COAT SIZING**

- **Ultra Slim Coats**
  - Chest measurement + 1" - or - Overarm measurement - 8"
  - The LARGER number is the coat size
- **Slim Fit Coats**
  - Chest measurement - or - Overarm measurement - 9"
  - The LARGER number is the coat size



SHIRT SLEEVE

- 1 Measure from base of neck centered on spine
- 2 Measure over the top of shoulder
- 3 Measure to elbow
- 4 Measure to wrist bone and add 1"



OUTSEAM

- Remove shoes and look straight ahead
- Measure from the back
- Start at top of waistband and measure to the floor
- Subtract 1" for a standard pant break

# COAT SIZING GUIDE

COAT	CHEST	OVERARM	WAIST	HIP	INSEAM	OUTSEAM	NECK	SLEEVE	HEIGHT	WEIGHT
34S	32 - 34	41 - 43	26 - 28	32 - 34	< 30.5	< 40.5	14 - 15.5	32 - 33	< 5' 8"	95 - 115
35S	33 - 35	42 - 44	27 - 29	33 - 35	< 30.5	< 40.5	14 - 15.5	32 - 33	< 5' 8"	105 - 125
36S	34 - 36	43 - 45	27 - 30	33 - 36	< 30.5	< 40.5	14 - 15.5	32 - 33	< 5' 8"	115 - 135
37S	35 - 37	44 - 46	28 - 31	34 - 37	< 30.5	< 40.5	14.5 - 15.5	32 - 33	< 5' 8"	125 - 145
38S	36 - 38	45 - 47	29 - 32	35 - 38	< 30.5	< 40.5	14.5 - 15.5	32 - 33	< 5' 8"	135 - 155
39S	37 - 39	46 - 48	30 - 33	36 - 39	< 30.5	< 40.5	15 - 16.5	32 - 33	< 5' 8"	145 - 165
40S	38 - 40	47 - 49	30 - 34	36 - 40	< 30.5	< 40.5	15 - 16.5	32 - 33	< 5' 8"	150 - 170
41S	39 - 41	48 - 50	31 - 35	37 - 41	< 30.5	< 40.5	15.5 - 16.5	32 - 33	< 5' 8"	155 - 175
42S	40 - 42	49 - 51	32 - 36	38 - 42	< 30.5	< 40.5	15.5 - 16.5	32 - 33	< 5' 8"	160 - 180
43S	41 - 43	50 - 52	33 - 37	39 - 43	< 30.5	< 40.5	16 - 17.5	32 - 33	< 5' 8"	170 - 190
44S	42 - 44	51 - 53	34 - 39	40 - 45	< 30.5	< 40.5	16 - 17.5	32 - 33	< 5' 8"	180 - 200
46S	44 - 46	53 - 55	36 - 41	42 - 47	< 30.5	< 40.5	16 - 17.5	32 - 33	< 5' 8"	190 - 215
48S	46 - 48	55 - 57	38 - 44	44 - 50	< 30.5	< 40.5	17 - 18.5	32 - 33	< 5' 8"	200 - 230
50S	48 - 50	57 - 59	40 - 46	46 - 52	< 30.5	< 40.5	17 - 18.5	32 - 33	< 5' 8"	210 - 250
COAT	CHEST	OVERARM	WAIST	HIP	INSEAM	OUTSEAM	NECK	SLEEVE	HEIGHT	WEIGHT
34R	32 - 34	41 - 43	26 - 28	32 - 34	29 - 33	39 - 43	14 - 15.5	34 - 35	5' 8" - 6'	105 - 125
35R	33 - 35	42 - 44	27 - 29	33 - 35	29 - 33	39 - 43	14 - 15.5	34 - 35	5' 8" - 6'	115 - 135
36R	34 - 36	43 - 45	27 - 30	33 - 36	29 - 33	39 - 43	14 - 15.5	34 - 35	5' 8" - 6'	125 - 145
37R	35 - 37	44 - 46	28 - 31	34 - 37	29 - 33	39 - 43	14.5 - 15.5	34 - 35	5' 8" - 6'	130 - 150
38R	36 - 38	45 - 47	29 - 32	35 - 38	29 - 33	39 - 43	14.5 - 15.5	34 - 35	5' 8" - 6'	140 - 160
39R	37 - 39	46 - 48	30 - 33	36 - 39	29 - 33	39 - 43	15 - 16.5	34 - 35	5' 8" - 6'	150 - 170
40R	38 - 40	47 - 49	30 - 34	36 - 40	29 - 33	39 - 43	15 - 16.5	34 - 35	5' 8" - 6'	160 - 180
41R	39 - 41	48 - 50	31 - 35	37 - 41	29 - 33	39 - 43	15.5 - 16.5	34 - 35	5' 8" - 6'	170 - 190
42R	40 - 42	49 - 51	32 - 36	38 - 42	29 - 33	39 - 43	15.5 - 16.5	34 - 35	5' 8" - 6'	175 - 195
43R	41 - 43	50 - 52	33 - 37	39 - 43	29 - 33	39 - 43	16 - 17.5	34 - 35	5' 8" - 6'	185 - 205
44R	42 - 44	51 - 53	34 - 40	40 - 45	29 - 33	39 - 43	16 - 17.5	34 - 35	5' 8" - 6'	195 - 215
46R	44 - 46	53 - 55	36 - 42	42 - 47	29 - 33	39 - 43	16.5 - 17.5	34 - 35	5' 8" - 6'	205 - 225
48R	46 - 48	55 - 57	38 - 44	44 - 50	29 - 33	39 - 43	17 - 18.5	34 - 35	5' 8" - 6'	220 - 240
50R	48 - 50	57 - 59	40 - 47	46 - 53	29 - 33	39 - 43	17 - 18.5	34 - 35	5' 8" - 6'	240 - 260
52R	50 - 52	59 - 61	42 - 49	48 - 54	29 - 33	39 - 43	17 - 18.5	34 - 35	5' 8" - 6'	260 - 275
54R	52 - 54	61 - 63	44 - 51	50 - 56	29 - 33	39 - 43	18 - 19.5	34 - 35	5' 8" - 6'	275 - 290
56R	54 - 56	63 - 65	46 - 53	52 - 58	29 - 33	39 - 43	18 - 20.5	34 - 35	5' 8" - 6'	290 - 300
58R	56 - 58	65 - 67	48 - 55	54 - 60	29 - 33	39 - 43	18 - 20.5	34 - 35	5' 8" - 6'	300 - 310
60R	58 - 60	67 - 69	50 - 57	56 - 62	29 - 33	39 - 43	19 - 22.5	34 - 35	5' 8" - 6'	310 - 330
62R	60 - 62	69 - 71	52 - 59	58 - 64	29 - 33	39 - 43	20 - 22.5	34 - 35	5' 8" - 6'	320 - 340
64R	62 - 64	71 - 73	54 - 61	60 - 66	29 - 33	39 - 43	21 - 24	34 - 35	5' 8" - 6'	340 - 350
66R	64 - 66	73 - 75	56 - 63	62 - 68	29 - 33	39 - 43	23 - 26	34 - 35	5' 8" - 6'	350 - 370
COAT	CHEST	OVERARM	WAIST	HIP	INSEAM	OUTSEAM	NECK	SLEEVE	HEIGHT	WEIGHT
34L	32 - 34	41 - 43	26 - 28	32 - 34	33 - 35.5	43 - 45.5	14 - 15.5	36 - 37	6' - 6' 3"	115 - 135
35L	33 - 35	42 - 44	27 - 29	33 - 35	33 - 35.5	43 - 45.5	14.5 - 15.5	36 - 37	6' - 6' 3"	125 - 145
36L	34 - 36	43 - 45	27 - 30	33 - 36	33 - 35.5	43 - 45.5	14 - 15.5	36 - 37	6' - 6' 3"	135 - 155
37L	35 - 37	44 - 46	28 - 31	34 - 37	33 - 35.5	43 - 45.5	14.5 - 15.5	36 - 37	6' - 6' 3"	140 - 160
38L	36 - 38	45 - 47	29 - 32	35 - 38	33 - 35.5	43 - 45.5	14.5 - 15.5	36 - 37	6' - 6' 3"	150 - 175
39L	37 - 39	46 - 48	30 - 33	36 - 39	33 - 35.5	43 - 45.5	15 - 16.5	36 - 37	6' - 6' 3"	155 - 185
40L	38 - 40	47 - 49	30 - 34	36 - 40	33 - 35.5	43 - 45.5	15 - 16.5	36 - 37	6' - 6' 3"	160 - 185
41L	39 - 41	48 - 50	31 - 35	37 - 41	33 - 35.5	43 - 45.5	15.5 - 16.5	36 - 37	6' - 6' 3"	170 - 190
42L	40 - 42	49 - 51	32 - 36	38 - 42	33 - 35.5	43 - 45.5	15.5 - 16.5	36 - 37	6' - 6' 3"	175 - 200
43L	41 - 43	50 - 52	33 - 37	39 - 43	33 - 35.5	43 - 45.5	16 - 17.5	36 - 37	6' - 6' 3"	185 - 210
44L	42 - 44	51 - 53	34 - 40	40 - 45	33 - 35.5	43 - 45.5	16 - 17.5	36 - 37	6' - 6' 3"	200 - 225
46L	44 - 46	53 - 55	36 - 42	42 - 47	33 - 35.5	43 - 45.5	16.5 - 17.5	36 - 37	6' - 6' 3"	210 - 235
48L	46 - 48	55 - 57	38 - 44	44 - 50	33 - 35.5	43 - 45.5	17 - 18.5	36 - 37	6' - 6' 3"	220 - 245
50L	48 - 50	57 - 59	40 - 47	46 - 52	33 - 35.5	43 - 45.5	17 - 18.5	36 - 37	6' - 6' 3"	240 - 265
52L	50 - 52	59 - 61	42 - 49	48 - 54	33 - 35.5	43 - 45.5	17 - 18.5	36 - 37	6' - 6' 3"	250 - 275
54L	52 - 54	61 - 63	44 - 51	50 - 56	33 - 35.5	43 - 45.5	18 - 19.5	36 - 37	6' - 6' 3"	265 - 290
56L	54 - 56	63 - 65	46 - 53	52 - 58	33 - 35.5	43 - 45.5	18 - 20.5	36 - 37	6' - 6' 3"	280 - 305
58L	56 - 58	65 - 67	48 - 55	54 - 60	33 - 35.5	43 - 45.5	18 - 20.5	36 - 37	6' - 6' 3"	295 - 315
60L	58 - 60	67 - 69	50 - 57	56 - 62	33 - 35.5	43 - 45.5	19 - 22.5	36 - 37	6' - 6' 3"	305 - 330
62L	60 - 62	69 - 71	52 - 59	58 - 64	33 - 35.5	43 - 45.5	20 - 22.5	36 - 37	6' - 6' 3"	315 - 340
64L	62 - 64	71 - 73	54 - 61	60 - 66	33 - 35.5	43 - 45.5	21 - 24	36 - 37	6' - 6' 3"	325 - 350
66L	64 - 66	73 - 75	56 - 63	62 - 68	33 - 35.5	43 - 45.5	23 - 26	36 - 37	6' - 6' 3"	350 - 375
COAT	CHEST	OVERARM	WAIST	HIP	INSEAM	OUTSEAM	NECK	SLEEVE	HEIGHT	WEIGHT
38XL	36 - 38	45 - 47	28 - 32	34 - 38	> 35	> 44	15 - 16.5	38 - 39	> 6' 3"	155 - 180
39XL	37 - 39	46 - 48	30 - 33	36 - 39	> 35	> 44	15 - 16.5	38 - 39	> 6' 3"	160 - 185
40XL	38 - 40	47 - 49	30 - 34	36 - 40	> 35	> 44	15 - 16.5	38 - 39	> 6' 3"	165 - 190
42XL	40 - 42	49 - 51	32 - 36	38 - 42	> 35	> 44	15 - 16.5	38 - 39	> 6' 3"	180 - 205
44XL	42 - 44	51 - 53	34 - 40	40 - 46	> 35	> 44	16 - 17.5	38 - 39	> 6' 3"	200 - 230
46XL	44 - 46	53 - 55	36 - 42	42 - 48	> 35	> 44	16.5 - 17.5	38 - 39	> 6' 3"	215 - 240
48XL	46 - 48	55 - 57	38 - 44	44 - 50	> 35	> 44	17 - 18.5	38 - 39	> 6' 3"	230 - 270
50XL	48 - 50	57 - 59	40 - 46	46 - 52	> 35	> 44	17 - 18.5	38 - 39	> 6' 3"	240 - 290
52XL	50 - 52	59 - 61	42 - 48	48 - 54	> 35	> 44	17 - 18.5	38 - 39	> 6' 3"	250 - 300

SHORT

REGULAR

LONG

X-LONG

# ADDITIONAL SIZING GUIDES

BOYS' FORMALWEAR MEASUREMENT GUIDE							
Age / Size	Height	Chest	Waist	Inseam	Outseam	Sleeve	Shirt
2	36"	22.5"	17 - 18"	13"	20"	18"	10-10.5" x 20"
3	38"	23"	19 - 20"	15"	22"	19"	10-10.5" x 20"
4	42"	24"	20 - 21"	15.5"	23"	20"	10-10.5" x 20"
5	45"	25"	21 - 22"	16.5"	24"	21"	11-11.5" x 22"
6	48"	25.5"	22 - 23"	18"	25.5"	22"	11-11.5" x 22"
7	50"	26"	23" - 24"	19.5"	27"	23"	11-11.5" x 24"
8	52"	26.5"	24"	21"	29"	24"	11-11.5" x 24"
9	54"	27.5"	24 - 25"	22.5"	31"	25"	12-12.5" x 26"
10	55"	28"	25"	24.5"	33"	26"	12-12.5" x 26"
11	57"	28.5"	25 - 26"	25"	33.5"	27"	12-12.5" x 28"
12	59"	29.5"	26"	26"	35"	28"	12-12.5" x 28"
13	60"	30.5"	26 - 27"	26.5"	35.5"	29"	13-13.5" x 30"
14	62"	31"	26 - 27"	27.5"	36.5"	30"	13-13.5" x 30"
15	63"	31.5"	27 - 28"	28.5"	38"	31"	13-13.5" x 32"
16	64"	32.5"	27 - 28"	29.5"	39"	31"	13-13.5" x 32"
17	65"	33.5"	28 - 29"	30"	39.5"	32"	13-13.5" x 32"
18	67"	34"	28 - 29"	30.5"	40.5"	32"	14-14.5" x 32"

BOYS' HUSKY SIZE GUIDE			
Age / Size	Height	Chest	Waist
8	51"	27.5"	26"
10	54"	28.5"	27"
12	58"	30.5"	28"
14	61"	32"	30"
16	63"	34"	32"

Note: Boys' Husky size coats are normally 1" shorter in the sleeves and 1/2" shorter in the body than a standard boy's size tuxedo jacket.

ADJUSTABLE PANT WAIST RANGE	
27 - 28 - 29	51 - 52 - 53
30 - 31 - 32	54 - 55 - 56
33 - 34 - 35	57 - 58 - 59
36 - 37 - 38	60 - 61 - 62
39 - 40 - 41	63 - 64 - 65
42 - 43 - 44	66 - 67 - 68
45 - 46 - 47	69 - 70 - 71
48 - 49 - 50	

REVERSIBLE BELT SIZING	
Size	Waist
X-Small	21 - 24
Small	25 - 28
Medium	29 - 32
Large	33 - 36
X-Large	37 - 40
2X-Large	41 - 44
3X-Large	45 - 48

NOVELTY SUSPENDER SIZING CHART	
Coat Size	Suspender Size
2B - 7B	Boys' (B)
8B - 46X	Men's (M)
47L - 60X	Long (L)

BOYS' SHIRT SIZE GUIDE			
Shirt Size	Neck	Max. Sleeve	Max. Mid-Section*
X-Small	10" - 10.5"	20"	23"
Small	11" - 11.5"	24"	27"
Medium	12" - 12.5"	28"	31"
Large	13" - 13.5"	32"	35"

\*Note: The Max Mid-Section measurement can be achieved by measuring around the largest part of the gentleman's stomach.

FITTED SHIRT SIZING CHART			
Shirt Size	Neck	Max. Chest	

# PANT FITS DEFINED

Every detail of your ensemble is important, including the break in your pants.  
Use this guide to help you achieve your preferred look.



## Full Break

**Deduct 0"**

from the outseam measurement  
to achieve this break

**Recommended Pant Styles:** Modern Slim



## Half Break

**Deduct 1"**

from the outseam measurement  
to achieve this break

**Recommended Pant Styles:** Modern Slim



## Quarter Break

**Deduct 1.5"**

from the outseam measurement  
to achieve this break

**Recommended Pant Styles:** Ultra Slim



## No Break

**Deduct 2"**

from the outseam measurement  
to achieve this break

**Recommended Pant Styles:** Ultra Slim, Euro Slim

**Please Note:** Refer to the Measuring Techniques on page 55 for instructions to measure a pant outseam. When ordering, deduct the recommended number of inches as shown above from the actual pant outseam measurement to achieve desired break.

### Modern Slim Fit Pants

Pant Styles:

252+ 372~ 472~ 750\* 990•  
362+ 392~ 650\* 850\*

### Ultra Slim Fit Pants

Pant Styles:

202~ 262~ 361+ 471~  
211+ 302~ 371~ 921~  
221+ 350~ 391~ 991+  
251+

### Euro Slim Fit Pants

Pant Styles:

N11P> N17P>

\* pant styles with a beaded stripe  
+ pant styles with no stripe  
• pant styles with a faille piped leg stripe

~ pant styles with no stripe, buttons for suspenders & belt loops  
> pant styles with an exact waist and belt loops - for purchase only



FOR RENTAL